

GCS900 REFRIGERATION CONTROLLER



GCS900 Controller

The GCS900 Refrigeration Control System, when combined with a satellite controller box at each room, actively monitors and controls all aspects of your refrigeration system. Using a 8" color touch-screen, the operator is able to view temperatures in various parts of the room, monitor which evaporators are running, and simply and easily turn systems on/off or defrost rooms individually through a graphical interface.

Energy management is also a feature of this control. Time of day, electric demand and refrigeration load are just a few of the criteria taken into consideration to adjust the refrigeration.

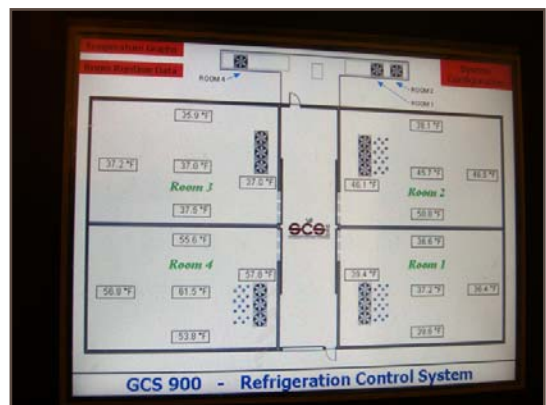
All installations can be custom-programmed per the customer needs and wants.



Satellite Controller @ Each Room

FEATURES

- Monitor and Control Rooms Efficiently
- View Temperatures at various points in the storage room.
- 8" Color Touch-Screen with PLC Programming
- Utilizes a Satellite Controller Box at Each Room
- Viewable and Programmable via the internet



Screenshot of GCS900 8" Touch Screen, showing Probe Temperatures, as well as Evaporator & Refrigeration Coil Statuses.



G A S C O N T R O L S Y S T E M S , I N C
4 2 0 S O U T H S T A T E S T R E E T • S P A R T A M I C H I G A N 4 9 3 4 5
T 8 0 0 . 4 8 7 . 7 9 9 4 • P 6 1 6 . 8 8 7 . 7 9 9 4 • F 6 1 6 . 8 8 7 . 1 1 2 8
W W W . G A S C O N T R O L S Y S T E M S . C O M • I N F O @ S T O R A G E C O N T R O L . C O M