

# EIII SERIES CO<sub>2</sub> SCRUBBER

Storage Control Systems, Inc. has long been a producer of efficient Carbon Dioxide Scrubbers for CO<sub>2</sub> control inside Controlled Atmosphere apple warehouse storage rooms.

The *EIII Series* models feature new formulated activated carbon, cylindrical beds, Smart CO<sub>2</sub> detection and an 8" flat-panel color touchscreen. The operator interface allows for easy programming of unique facility room numbers, CO<sub>2</sub> concentrations for peak performance scrub and purge times, background timing defaults, CO<sub>2</sub> scrub cycle history, log of CO<sub>2</sub> levels, history of cycles per day on a room, scrubber capacity ratio and alarms.

Large models feature Variable Frequency Drives<sup>‡</sup> to insure maximum efficiency CO<sub>2</sub> adsorption for various warehouse installations across the world. Neither 50Hz or various piping should change the adsorber characteristics.

Other features include individually programmed rooms, single or multi-room sequencing, auto room pressure testing, and new adaptive technology for CO<sub>2</sub> saturation setpoints and control. Oxygen Control is also a feature for the smaller warehouse operator.

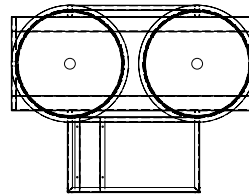
As the scrubber reduces the CO<sub>2</sub> in the room, the cycle time adjusts accordingly making the scrubber more efficient each cycle. This ultimately will reduce your cycle times and make the Oxygen in the room easier to control. ULO easily achieved on SmartFresh treated rooms.

Contact us today for further information and pricing.



- ▣ Various Sizes for Various Storage Capacities
- ▣ PLC / CO<sub>2</sub> / Optional O<sub>2</sub> Analyzers Onboard
- ▣ Individual Room Sequencing
- ▣ Auto Room Pressure Testing
- ▣ Energy Efficient Variable Frequency Drives<sup>‡</sup>
- ▣ 8" Color Touchscreen

<sup>‡</sup>VFD available only on larger models (SCS 750EIII and above.)



*The top view of an EIII Series Scrubber shows dual carbon beds and a separate control and piping housing for a clean, efficient design.*

## S P E C I F I C A T I O N S \*

MODEL	SCRUBBING CAPACITY	DIMENSIONS (D x L x H)	WEIGHT	Kw <sup>†</sup>
SCS 100SII	57 Kg. CO <sub>2</sub> /24hr. @ 3%	35"x 45"x 65"	550 lbs.	0.6
SCS 200SII	99 Kg. CO <sub>2</sub> /24hr. @ 3%	35"x 48"x 69"	780 lbs.	0.8
SCS 300SII	158 Kg. CO <sub>2</sub> /24hr. @ 3%	40"x 57"x 75 1/4"	1150 lbs.	1.8
SCS 500SII	300 Kg. CO <sub>2</sub> /24hr. @ 3%	48"x 72"x 81"	2150 lbs.	2.9
SCS 600SII	402 Kg. CO <sub>2</sub> /24hr. @ 3%	48"x 72"x 81"	2350 lbs.	3.5
SCS 730EIII	504 Kg. CO <sub>2</sub> /24hr. @ 3%	55"x 96"x 99"	5000 lbs.	4.6
SCS 750EIII	670 Kg. CO <sub>2</sub> /24hr. @ 3%	84"x 96"x 99"	6000 lbs.	3.4
SCS 900EIII	850 Kg. CO <sub>2</sub> /24hr. @ 3%	93"x 116"x 99"	6500 lbs.	4.2
SCS 1200EIII	1047 Kg. CO <sub>2</sub> /24hr. @ 3%	101"x 126"x 105"	7600 lbs.	5.0
SCS 1400EIII	1196 Kg. CO <sub>2</sub> /24hr. @ 3%	101"x 126"x 105"	8500 lbs.	6.0
SCS 1600EIII	1463 Kg. CO <sub>2</sub> /24hr. @ 3%	76"x 204"x 122"	9700 lbs.	7.0

\*Specifications based on 480v/60Hz

<sup>†</sup>Kw can vary depending on piping.

© 2008 STORAGE CONTROL SYSTEMS, INC. ALL RIGHTS RESERVED. CONTACT US FOR MORE INFORMATION.



**S T O R A G E C O N T R O L S Y S T E M S**  
 4 2 0 S O U T H S T A T E S T R E E T • S P A R T A M I C H I G A N 4 9 3 4 5  
 T 8 0 0 . 4 8 7 . 7 9 9 4 • P 6 1 6 . 8 8 7 . 7 9 9 4 • F 6 1 6 . 8 8 7 . 1 1 2 8  
 W W W . S T O R A G E C O N T R O L . C O M • I N F O @ S T O R A G E C O N T R O L . C O M



# ADVANTAGES OF USING SCS SCRUBBERS

- ▣ Built in the USA at SCS Facilities
- ▣ Top-Grade Carbon specially formulated for CO<sub>2</sub> Removal
- ▣ 8" Touch Screen w/ PLC-Control
  - Room Pressure Monitoring and Logging
  - Room Pressure Testing Feature
  - MODBUS with the DK Control System and SCS Controls
  - Automatically Logs Run-Time to Prove Capacity
  - Alarm Screen Allows Shut-Down for Over Pressure and Blower Failure
- ▣ PLC-Input Driven On-Board CO<sub>2</sub> Analyzer
  - Controls Switching of the Cycles
  - As the CO<sub>2</sub> Decreases The Cycle Times Change
- ▣ Simple, Clean, Energy-Efficient Design
  - Typically Half the Kilowatt Draw of Competitors units
  - Analyzer-Dependant, Variable Cycle Times Save Energy & Increase Lifespan of Carbon Beds
  - Highly-Organized Design For Efficiency as well as Aesthetic Appeal
  - White Powder-Coated Panels Conceal Moving Parts, Keeping Everything Clean
  - Engineered for Easy Service
- ▣ No Auxiliary Air Compressor Required
- ▣ No Lung to Place or Maintain
- ▣ Direct Drive, USA-Made Blowers Eliminate Belt Headaches
- ▣ Variable Frequency Drives (VFDs)
  - Insure Proper Airflow to Each Room
  - Maximize Efficiency on Long Runs
- ▣ Automatic Room Pressure Testing
- ▣ Escalated CO<sub>2</sub> Exposure Increases Firmness

Storage Control Systems, Inc. was established in 1982 by Caryl A. Schaefer, father of the current owner James. C. Schaefer. SCS started out by building our very first carbon dioxide scrubbers and aluminum CA doors for a local fruit grower. Today, 27 years later, we pride ourselves as a Worldwide leader in the Controlled Atmosphere, fruit and vegetable storage industries. We have installations of our products Worldwide, including: South America, India, USA, Canada, Mexico, Australia, United Kingdom, and Europe.

In these several hundred installations around the World, we have supplied Permea Nitrogen Generators, SCS Carbon Dioxide SmartScrubbers, GCS Gas Analyzers, SCS CA Seal Doors, and all the piping and valving associated with CA stores. Our equipment is built to last with mostly US made components. Quality control is our first priority, and attended to daily. Our management team cares about each customer's needs on every job, no matter the size. Many models and sizes of equipment are available, and being the manufacturer allows us to custom build equipment to particular applications and customer needs.

## LIME vs. CO<sub>2</sub> SCRUBBING OVER NINE MONTHS IN CA

VARIETY: RED DELICIOUS  
 CA BEGIN DATE: 11 OCT 06  
 ROOM OPENED: 26 JUN 07  
 NO SMARTFRESH TREATMENT

DATA PROVIDED BY DR. JENNIFER R. DeELL  
 FRESH MARKET QUALITY PROGRAM LEAD  
 ONTARIO MINISTRY OF AGRICULTURE, FOOD & RURAL AFFAIRS  
 SIMCOE, ONTARIO, CANADA



ALL PRODUCTS DESIGNED & DEVELOPED IN MICHIGAN THROUGH 27 YEARS OF EXPERIENCE IN PARTNERSHIP WITH

### LIME TREATMENT

O<sub>2</sub>: 2.0%  
 CO<sub>2</sub>: 0.0-0.3%

### CO<sub>2</sub> SCRUBBING

2.0% :O<sub>2</sub>  
 2.5% :CO<sub>2</sub>



SHELF-LIFE AT ROOM TEMPERATURE  
 PRESSURE TEST AVERAGES

12.8	1 DAY	14.4
13.0	6 DAY	14.0
11.7	13 DAY	12.6
10.6	19 DAY	11.5



The nature of our company is to constantly improve upon our products. This may therefore result in changes to products depicted in this brochure. Please contact SCS for the most current information.

© 2008 Storage Control Systems, Inc. All Rights Reserved.



**STORAGE CONTROL SYSTEMS**  
 420 SOUTH STATE STREET • SPARTA MICHIGAN 49345  
 T 800.487.7994 • P 616.887.7994 • F 616.887.1128  
 WWW.STORAGECONTROL.COM • INFO@STORAGECONTROL.COM