



# trio

## COMPLETE CA BUILDING PACKAGE

CONTROLLED ATMOSPHERE BUILDING • CA EQUIPMENT • REFRIGERATION



### FEATURES :

for a video tour :: [www.storagecontrol.com/trio](http://www.storagecontrol.com/trio)

- ▣ (4) 16,000+ bu./800+ Bin\* CA Rooms
- ▣ SCS 500SII CO<sub>2</sub> Scrubber, SCS PP-322 N<sub>2</sub> Generator  
& GCS900 Ref. Controller for Complete Automatic CA Control
- ▣ Insulated Panel Room Construction by Michigan Panel, LLC
- ▣ 24' Hallway with Enough Space for 52' Semi Trailer Storage
- ▣ 25'-0" Eave Height - approx. 24'-8" Int. Room Height
- ▣ 24' Lean-To (w. Optional Drencher)
- ▣ Accessory Room under Lean-To (w. Optional Office Fit-Out)

\*Capacity based on Macro32 bin size. See PDF for alternate counts.

option **D**

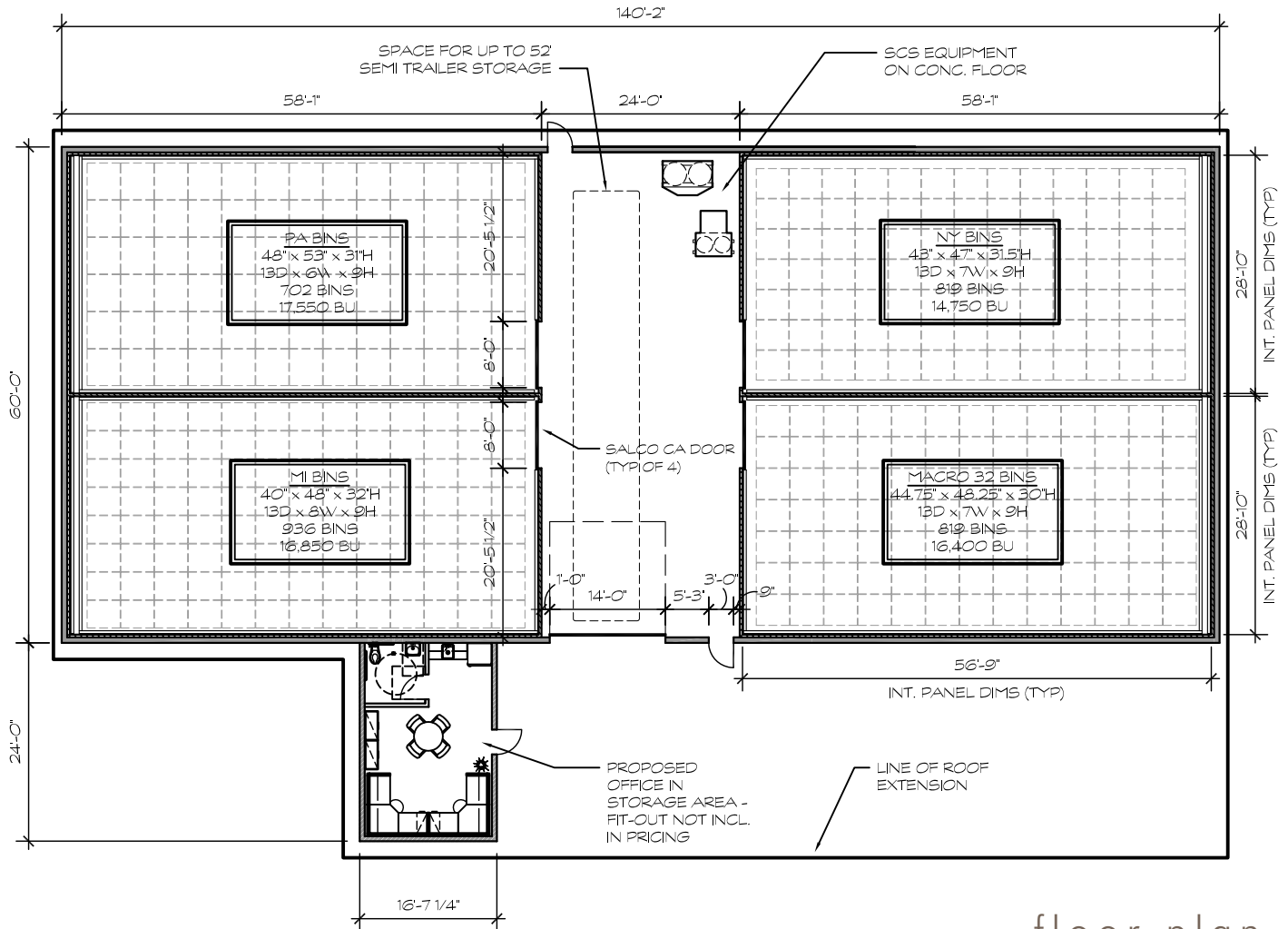
© 2008 STORAGE CONTROL SYSTEMS, INC. ALL RIGHTS RESERVED. CONTACT US FOR MORE INFORMATION.

The logo for Storage Control Systems, featuring the letters 'SCS' in a bold, stylized font with a green leaf-like element above the 'S'. Below 'SCS' is a smaller 'Z' with a horizontal line through it.

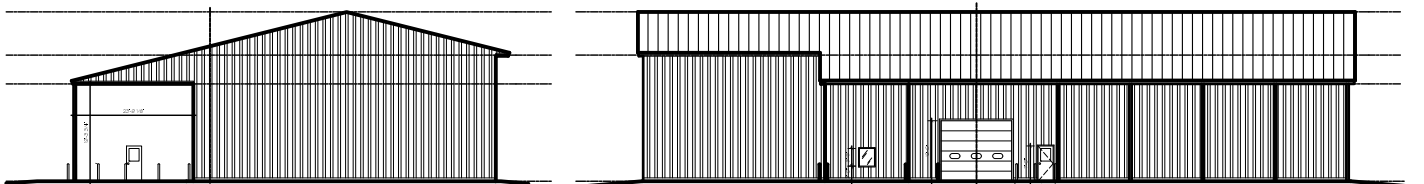
**STORAGE CONTROL SYSTEMS**  
420 SOUTH STATE STREET • SPARTA MICHIGAN 49345  
T 800.487.7994 • P 616.887.7994 • F 616.887.1128  
WWW.STORAGECONTROL.COM • INFO@STORAGECONTROL.COM

# trio

# COMPLETE CA BUILDING PACKAGE



floor plan



elevations

© 2008 STORAGE CONTROL SYSTEMS, INC. ALL RIGHTS RESERVED. CONTACT US FOR MORE INFORMATION.



**STORAGE CONTROL SYSTEMS**  
 420 SOUTH STATE STREET • SPARTA MICHIGAN 49345  
 T 800.487.7994 • P 616.887.7994 • F 616.887.1128  
 WWW.STORAGECONTROL.COM • INFO@STORAGECONTROL.COM