



# SCS CHILLTIGHT DOORS



## FEATURES

- ❑ Cold Storage Applications
- ❑ Thermally-Broken Frame
- ❑ Stocked and Custom Sizes Available
- ❑ Horizontal Slide, Hinged, or Vertical Lifting Operation
- ❑ Optional Window
- ❑ Aluminum Construction - No Wood
- ❑ Freezer Package Option

Storage Control Systems is proud to offer a range of doors, becoming the new industry standard for cold storage applications. Our Chilltight doors are either hinged or slide horizontally on an aluminum track. Having the ability to seal a room beyond the capabilities of a typical commercial door combined with a thermally broken construction to prevent heat transfer adds efficiency to cold storages.

All doors are constructed with an aluminum framework around the perimeter, and incorporates standard IMP for the leaf. The doors come completely assembled and ready to install in both cooler and heat-traced freezer applications.

© 2022 STORAGE CONTROL SYSTEMS, LTD. ALL RIGHTS RESERVED. CONTACT US FOR MORE INFORMATION.



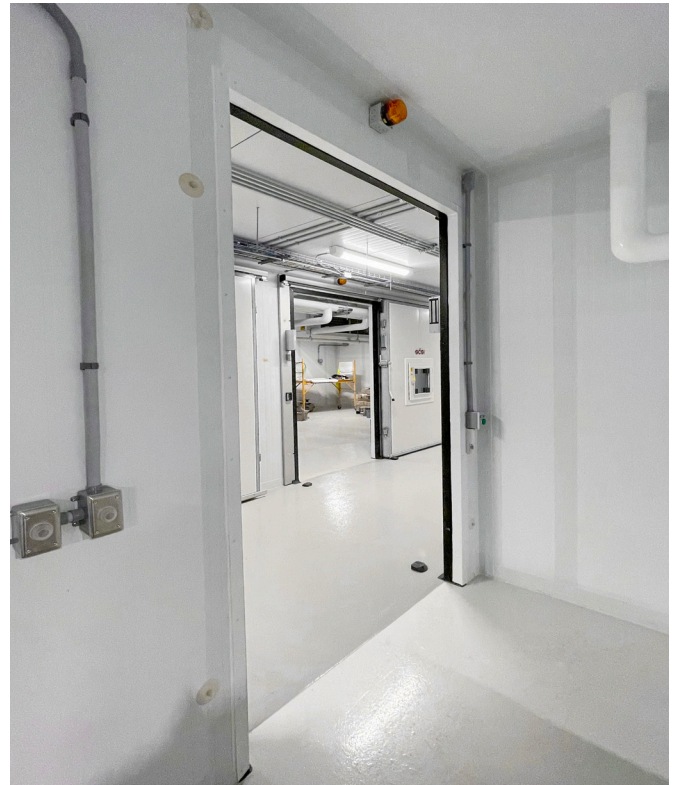
STORAGE CONTROL SYSTEMS, INC  
100 APPLEWOOD DRIVE SPARTA MICHIGAN · SODUS NEW YORK · UNION GAP WASHINGTON  
T 616.887.7994 · F 616.887.1128 · INFO@STORAGECONTROL.COM · STORAGECONTROL.COM



# SCS CHILLTIGHT DOORS



*Sliding SCS Chilltight Doors in Facility Hallway*



*Interior of Room with SCS Chilltight Door Installed*



*Chilltight Door Manufacturing at SCS Headquarters in Michigan*



*Sliding Example Chilltight Door Seal at Corner*

© 2022 STORAGE CONTROL SYSTEMS, LTD. ALL RIGHTS RESERVED. CONTACT US FOR MORE INFORMATION.



STORAGE CONTROL SYSTEMS, INC  
100 APPLEWOOD DRIVE SPARTA MICHIGAN · SODUS NEW YORK · UNION GAP WASHINGTON  
T 616.887.7994 · F 616.887.1128 · INFO@STORAGECONTROL.COM · STORAGECONTROL.COM