



INSULATED METAL PANELS



Interior of IMP Agricultural Grow Room w/ SCS SeamSeal



Controlled Atmosphere Storage with SCS IMP & SeamSeal

FEATURES

- Perfect for Cold Storage, Freezer, and CA Applications
- High-Density PIR or QuadCore™ High R-Value Foam Cores
- Will Not Lose R-Value Over Time
- 40" & 44" Widths; Up to 80' Lengths
- Tongue & Groove Connection (See Right)
- Water/Air Tight with Minimal Thermal Transfer/Vapor Drive
- Semi-Structural, Suitable for Exterior & Interior Walls
- Easily Washable with Little to No Additional Maintenance

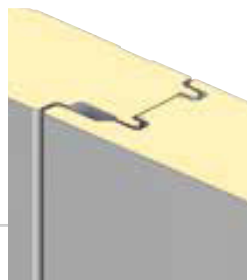
The insulated metal paneling solution offered by Storage Control Systems is intended to improve the experience of both traditional cold storage/freezer and more rigorous controlled atmosphere (CA) applications. Touting an R34 insulation rating that won't deteriorate over time makes them an extremely efficient alternative to traditional insulation or spray foam, and most importantly stops vapor drive, enabling RH control.

IMP construction is comprised of coated galvalume sheeting on either side of a rigid closed cell core of Polyisocyanurate (PIR) or new QuadCore™ insulation for improved R-value and fire-resistance. Panels can be manufactured in up to 80' lengths, and the tongue and groove connection between panels makes for easy installation. Additionally, the steel sheeting on the panel's opposing faces do not connect, thereby breaking thermal transfer. This means that a single panel wall may be used to partition two rooms with no additional insulation or structural support required, cutting down on materials & installation costs, as well as maximizing internal floor space.

In order to make rooms gastight, our optional SeamSeal system can be installed. An optional flexible and permanent seam tape is applied to the interior panel joints, then, to ensure a perfect seal and protection from condensation, the tape is painted over with a flexible seam paint. This allows the panels to move in their natural expansion/contraction without compromising the room's seal.

The panels are semi-structural by nature, so while they are not intended to serve as exterior or structural supports, they are capable of creating self-supporting rooms/hallways within a new or existing structure.

Maintenance on the panels is negligible and certainly less than with traditional room construction methods. The panels have a natural resistance to mold/fungi, but when cleaning is required, they may be washed easily. The upgraded finish and smooth texture of interior faces allow for even greater resistance to wear associated with cleaning, and offer fewer places for spores to collect.



© 2022 STORAGE CONTROL SYSTEMS, LTD. ALL RIGHTS RESERVED. CONTACT US FOR MORE INFORMATION.



STORAGE CONTROL SYSTEMS, INC
100 APPLEWOOD DRIVE SPARTA MICHIGAN · SODUS NEW YORK · UNION GAP WASHINGTON
T 616.887.7994 · F 616.887.1128 · INFO@STORAGECONTROL.COM · STORAGECONTROL.COM



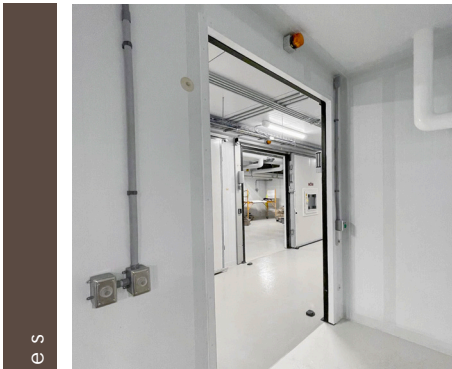
INSULATED METAL PANELS



ceiling support solutions



IMP hallway + SCS doors



interior room finishes



SCS seamseal

© 2022 STORAGE CONTROL SYSTEMS, LTD. ALL RIGHTS RESERVED. CONTACT US FOR MORE INFORMATION.



STORAGE CONTROL SYSTEMS, INC
100 APPLEWOOD DRIVE SPARTA MICHIGAN · SODUS NEW YORK · UNION GAP WASHINGTON
T 616.887.7994 · F 616.887.1128 · INFO@STORAGECONTROL.COM · STORAGECONTROL.COM