



SCS PASSTIGHT DOORS



FEATURES

- ❑ Cold Storage Applications
- ❑ Thermally-Broken Construction
- ❑ Single & Dual Door Configurations Available
- ❑ Easy & Waterproof Washdown
- ❑ Optional Window with Blackout Cover
- ❑ Corrosion-Proof Construction - No Wood
- ❑ Freezer Package Available



Passtight Man Door with Seal and Quick Install IMP Frame Detail

Storage Control Systems is proud to offer a range of doors as the standard for insulated and cold storage facilities. Having the ability to seal a room beyond the capabilities of a typical commercial door eliminates vapor drive, keeping the atmosphere isolated within a room for ultimate control.

With most operations using insulated metal panels as standard, the Passtight door is a logical choice for a storage room's single or dual man door that is simple to install. No tedious fitting of a six 5.5" steel frame door in a 4" or 6" IMP wall; the sandwich design allows for speedy install and a remarkable finish for a professional look with all of the added benefits mentioned above. SCS Passtight doors are economically priced and the installation time savings make them the answer for your operation.

All SCS doors are constructed with a thermally-broken aluminum framework around the perimeter, urethane foam filled leaves, and with the option to have the frame heat-traced for freezer applications.

© 2022 STORAGE CONTROL SYSTEMS, LTD. ALL RIGHTS RESERVED. CONTACT US FOR MORE INFORMATION.



STORAGE CONTROL SYSTEMS, INC
100 APPLEWOOD DRIVE SPARTA MICHIGAN · SODUS NEW YORK · UNION GAP WASHINGTON
T 616.887.7994 · F 616.887.1128 · INFO@STORAGECONTROL.COM · STORAGECONTROL.COM

SCS PASSTIGHT DOORS

SPECIFICATIONS

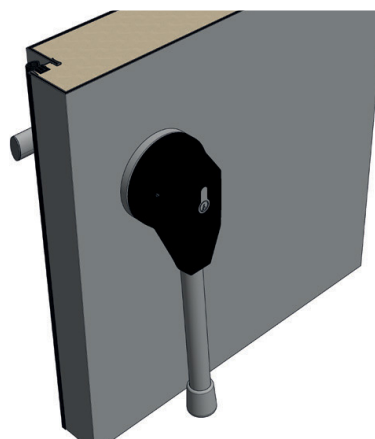
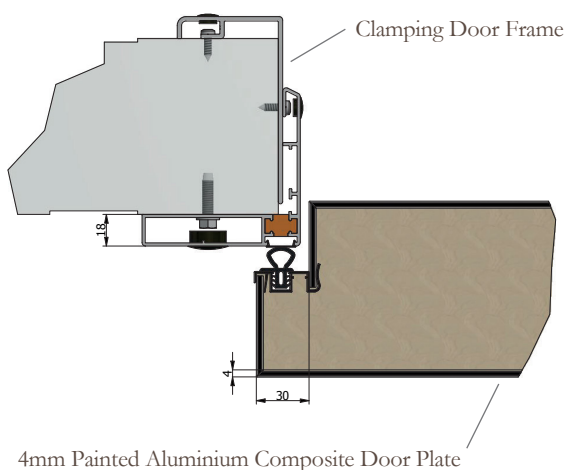
CONSTRUCTION	Door leaf constructed of a core of insulation material, covered on both sides with 4mm lacquered aluminum composite plate with a core of plastic.
STANDARD SIZES	Single: 3'x7' (37.375"x84.625"H) or 4'x8' (47.25"x96.5"H) Dual: 6'x8' (74.75"x96.5"H)
DOOR LEAF THICKNESS	4" (utility/refrigeration), 6" (freezer, special order option)
R-VALUE	Std. 4" approx. 4,03 (m ² .K/W)
COLOUR OF DOOR LEAF	Similar to RAL 9010 (white)
SEALING	Rubber profile seal complete around door perimeter
FRAME	Anodised aluminum clamping frame for wall thickness 2-4", 4 - 6", or 6 - 8".
THRESHOLD	Exclusive (utility/refrigeration), Inclusive (freezer).
FRAME HEATING	Exclusive (utility/refrigeration), Door frame & threshold (freezer)
HINGES	Stainless steel/plastic rising hinges.
LOCKS	Pull fastener handle with cylinder lock on exterior/inner emergency release by means of a push button; outside fastener/handle with cylinder lock (special order).
ADDITIONAL OPTIONS	Deviating measurement, door leaf and outer frame in stainless steel, outer frame all round, window in the door, door closer, storm chain, rain hood and more.



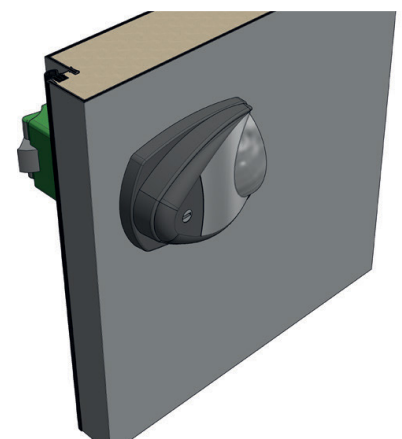
SCS Passtight Inswing Mounting Option



SCS Dual Passtight Door w/ Overlapping Seal



Seal Handle (Special Order; Single Only)



Fastener Handle (Standard)

© 2022 STORAGE CONTROL SYSTEMS, LTD. ALL RIGHTS RESERVED. CONTACT US FOR MORE INFORMATION.



STORAGE CONTROL SYSTEMS, INC
100 APPLEWOOD DRIVE SPARTA MICHIGAN · SODUS NEW YORK · UNION GAP WASHINGTON
T 616.887.7994 · F 616.887.1128 · INFO@STORAGECONTROL.COM · STORAGECONTROL.COM